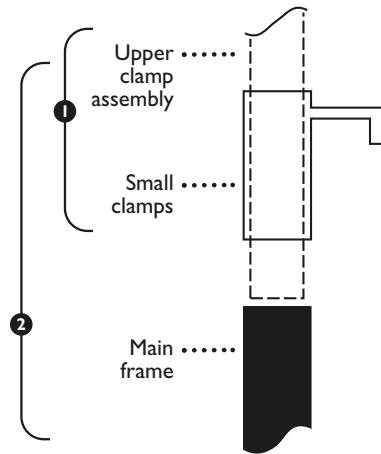


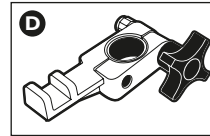
## To Assemble The Stak Easel

- 1 Slip the small clamps, with hooks pointed down, onto the bottom of the upper clamp assembly.
- 2 Then slide the upper clamp assembly into main frame. (Some lubrication of the upper clamp assembly frame legs may be useful.) That completes the easel assembly. Read the usage tips for more efficient use of your easel.



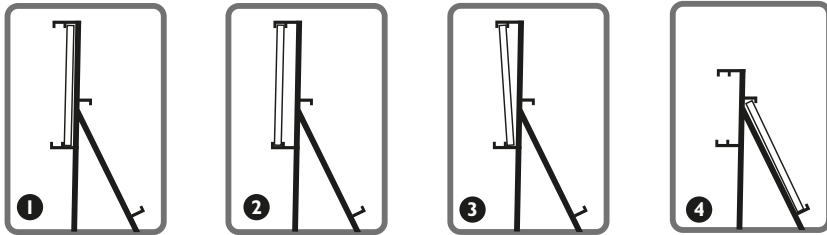
## Parts List

- A** Mainframe with 3 “clips” attached (3rd clip is optional)
- B** Upper clamp assembly
- C** Small clamps 2 per easel, in box or plastic bag
- D** Clips – adjustable holding devices



## Stak Easel Usage Tips

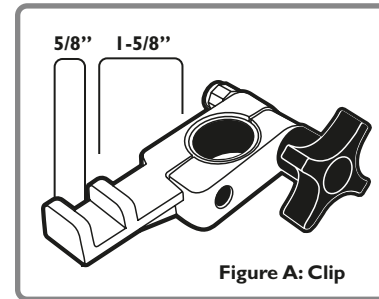
There are four positions that may be used to support painting stretchers, drawing boards, etc.



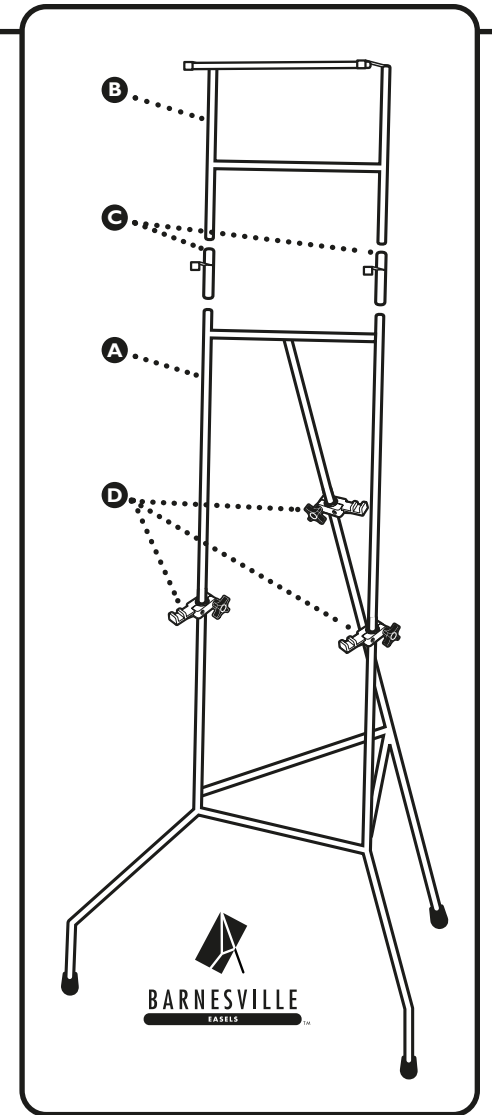
- 1 Stretcher at front.** Bottom of stretcher on clips – top held down by upper clamps. Smaller stretchers may be better accommodated by using the small clamps. Narrow stretchers (less than 17” wide) may require a small board across the clips, or may be held in place with one clip and one small clamp.
- 2 Drawing boards.** The space between the ridges on the clip is 5/8” (Figure A). The front space is designed to hold a 1/2” drawing board. Thinner boards, such as masonite boards, are best held by rotating the clips slightly to “pinch” the board and provide a more rigid support. Stretchers with bars wider

than 1-1/2” may rest on top of the support. If larger stretcher bars are routinely used, the smaller ridge may be ground off. Upon request, we can supply clips with the ridge removed.

- 3 Drawings with chalk, pastel, charcoal, etc.** Attach paper to a drawing board. Position the bottom of the drawing board in the 1-5/8” slot. Place the top of the board in front of the cross member on the upper clamp. Lower the clamp. Rotate the clips to “pinch” the drawing board and hold it securely. The board is now at an angle so that the drawing material will not slide down the paper and spoil the art work.



- 4 Sloped surface.** If the artist prefers to work on a sloping surface, the back of the easel may be used. Position the third clip at an appropriate height. Rotate the small clamps so that the hooks face to the rear of the easel. Raise the upper clamp assembly to the appropriate height. (The upper clamp assembly is used to hold the small clamps in their place and support the top of the drawing/ painting surface.) Lower the clamp to support the work firmly.



## To level the working surface (setting the clips at the same height)

Several methods may be used. The simplest method is to:

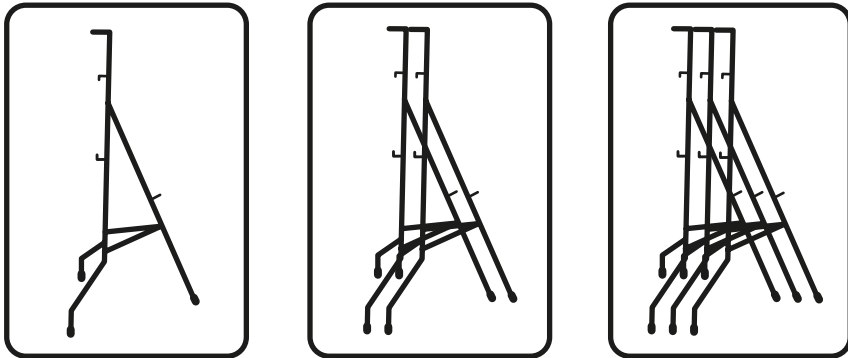
- Place one clip at an appropriate level for the bottom of the painting/drawing support
- Adjust the upper clamp assembly
- Raise the second clip to provide support on both sides of the easel
- Leveling marks may be painted or scratched on the easel

## Maintenance

- Lubricate upper clamp assembly legs from time to time
- Lubrication of clip is unnecessary because the bushing on the clip is naturally lubricated
- Clean any excess paint from easel to insure smooth operation

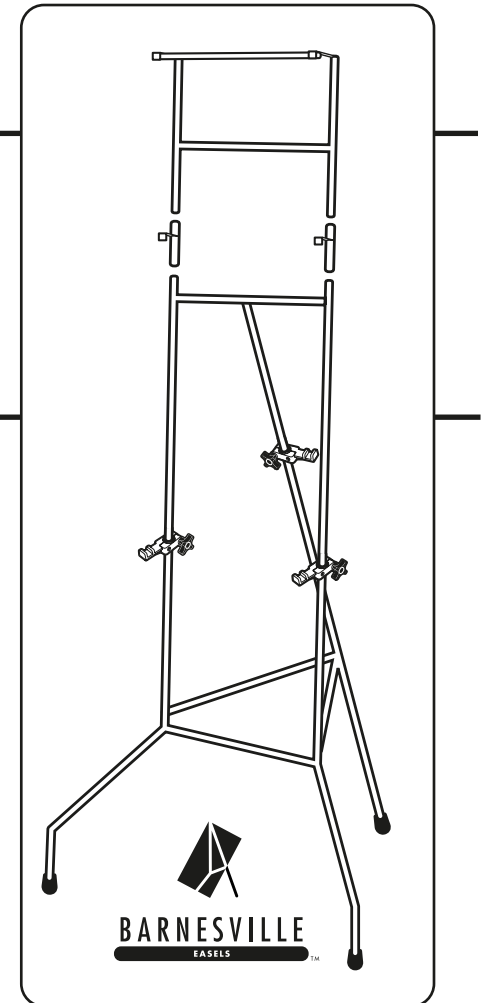
## Storage

One unique feature of the Barnesville Stak Easels is that they can be stacked in “nests” of up to eight easels. To accomplish this most efficiently, turn clips parallel to the front of the easel, raise the upper clamp assemblies to slightly different heights (decrease the height from back to front) and place the back leg of the second easel as close as possible to the first easel. Stack each successive easel in this manner until the stack is complete.



Side view of easel storage stacking.

## BARNESVILLE STAK EASEL Assembly Instructions



**BARNESVILLE**  
EASELS™

996 18th Avenue Cir N  
Moorhead MN, 56560 USA  
(612) 719-6278  
hilaryray@barnesvilleeasels.com